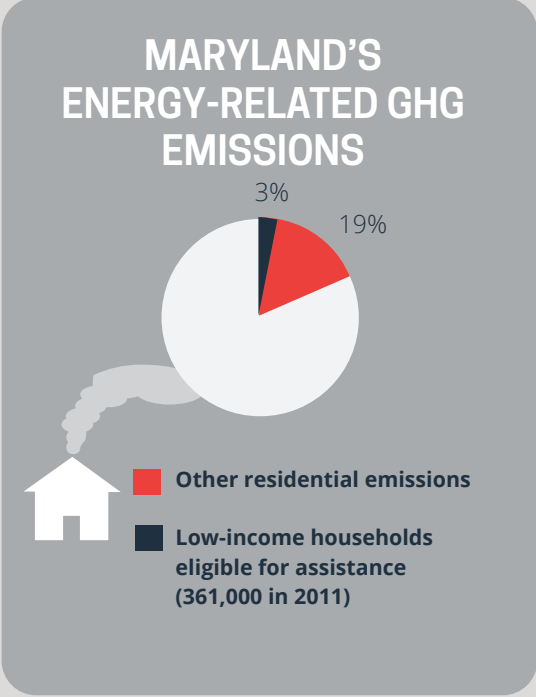
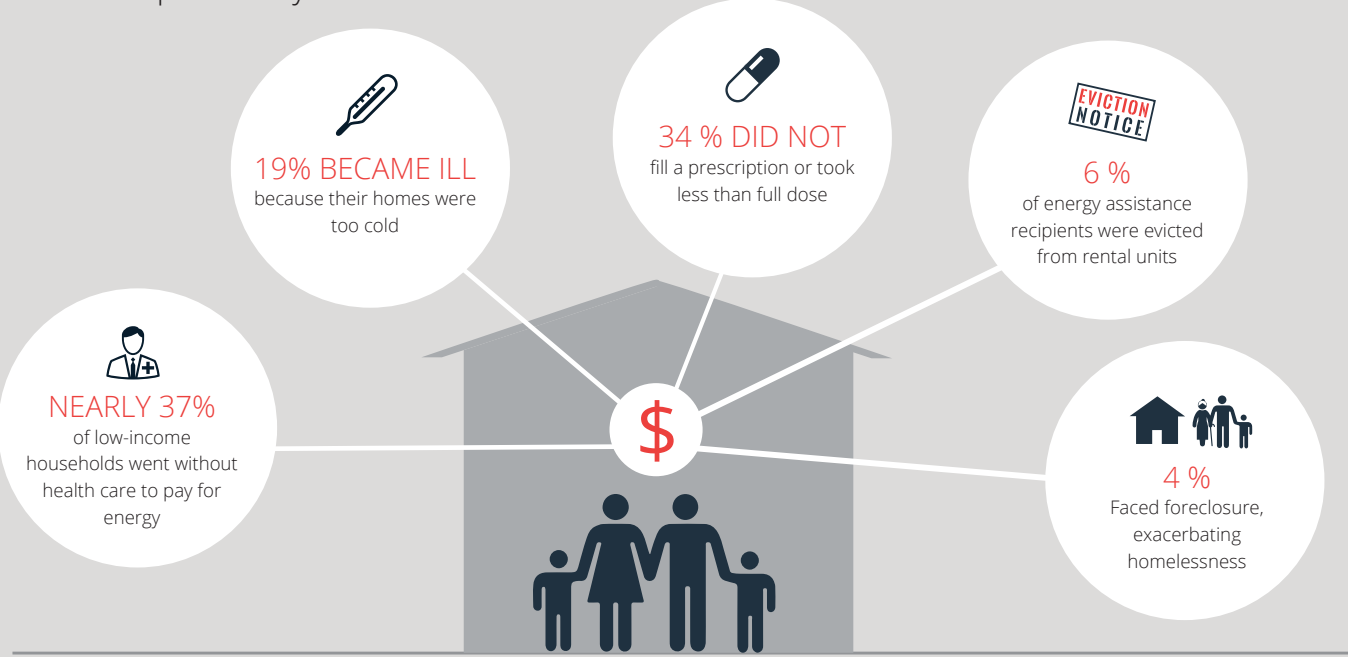
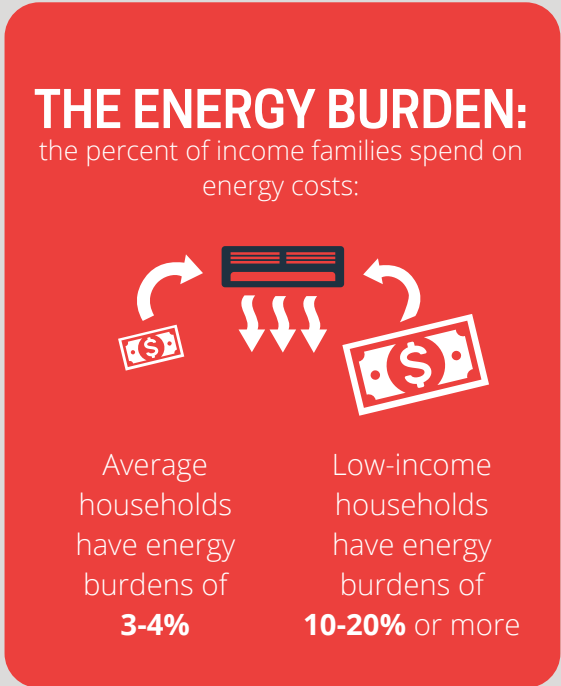
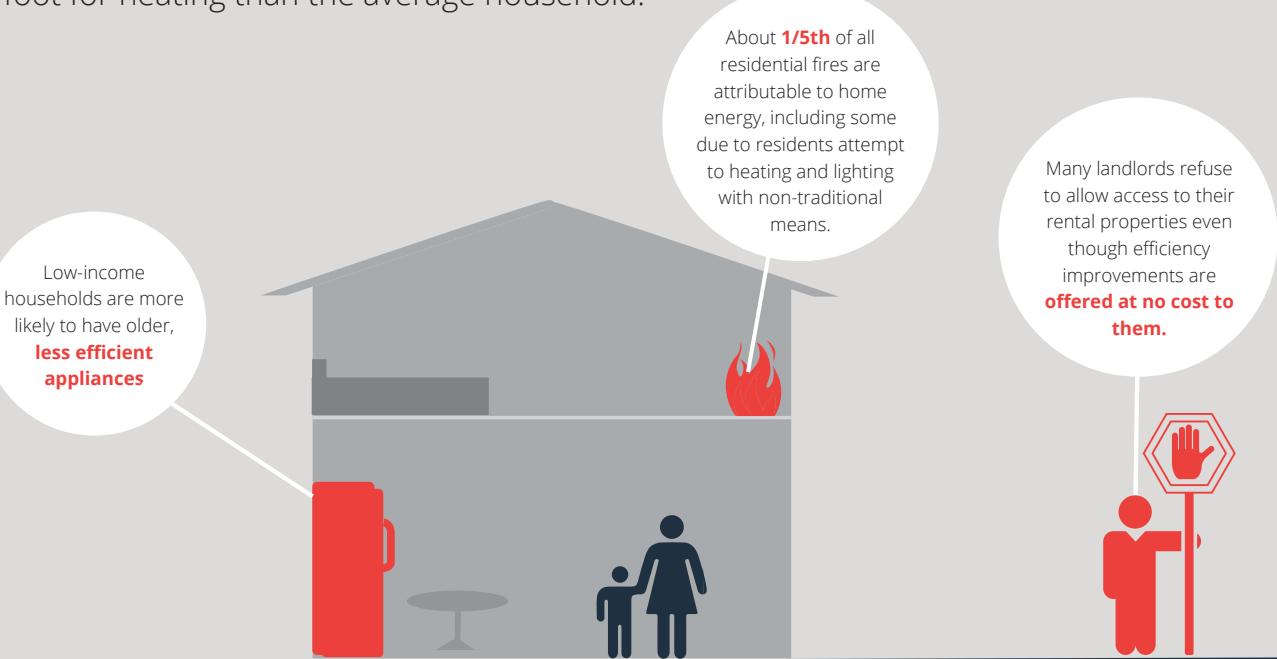


# IMPOSSIBLE CHOICES: Heating, Rent, OR Medicine?

**The Problem:** Low-income households in Maryland face impossible choices between paying for energy, health, food, and housing. A 2011 national survey showed that in the prior five years:

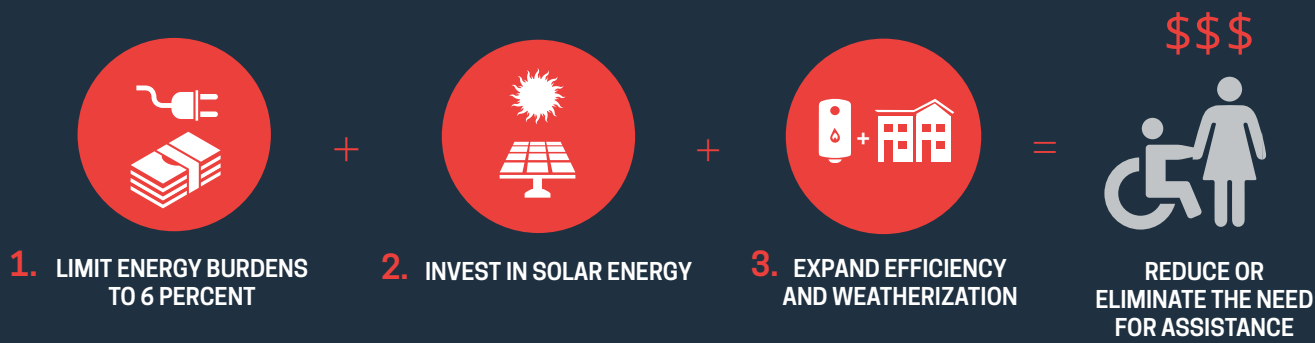


**Low-income homes are less efficient than the average home:** On average they use 50 percent more energy per square foot for heating than the average household.

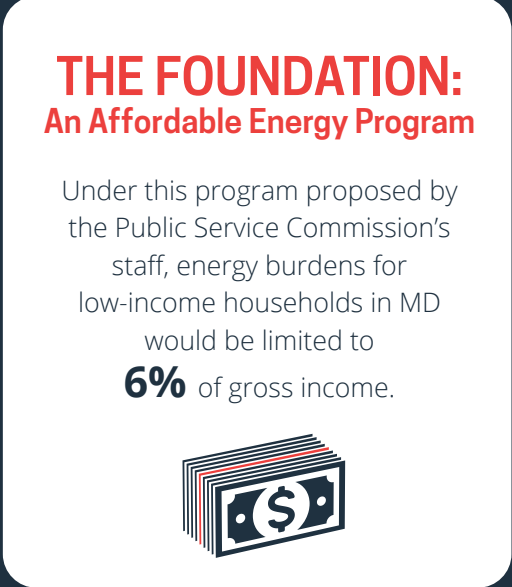


## The Solution

An Affordable Energy Program with Efficiency and Solar Energy



The combination of investments in solar energy, efficiency, and weatherization will reduce the amount of assistance needed in the future. In many cases, the bills will be below six percent of income, eliminating the need for assistance for those households.



### SWITCH FROM FOSSIL FUELS TO HVAC SYSTEMS

State energy assistance programs should allow units to switch from using fossil fuels, especially propane and fuel oil, to efficient electric HVAC systems. This will save money and reduce emissions.



## The Benefits to Maryland

